

“Passenger Rooks”: New First Move Economy Records

A.Frolkin & A.Buchanan



(chessATanselanDOTcom & afretroATgmailDOTcom)

Published: 12-Dec-2020

Corrected version: 23-Dec-2020

Acknowledgements

Except where indicated in two compositions, all problems are original by the authors jointly. Mario Richter kindly checked the problems in an earlier draft. Naturally any errors which remain, the two authors will blame on each other. *Die Schwalbe* is especially appropriate for a bird-themed article. We are very grateful to the Retro & Math Editor, Thomas Brand, for his hard work translating this article into German, and have included as many English bird puns as we can to make his task more challenging. The moa the merrier. So, without feather¹ dodo, let’s just wing it.

	
<p><i>Corvus frugilegus</i>² Apologies for “flipping the bird” to face right</p>	<p><i>Corvus frugilegus (albino)</i>³ Is this rara avis a promoted pawn?</p>

Birds’ Opening^{4 5 6}

Passenger pigeons used to throng the skies – but here we study a different bird: the passenger rook.⁷

A flock of retro problems asks solvers to prove the **first** move of a particular piece in a position. Let’s begin with a very simple one, for those unfamiliar:

¹ This word is partridge-ularly approp-rhea-te, since noted composer Chris Feather’s works include: “Broodings”, “Hatchings” & “Moultings”. See: <http://kobulchess.com/en/composers/worldwide-composers/38-chris-feather.html>

² Rook, (*Corvus frugilegus*, Saatkrähe) © 2011 Tony Hisgett according to Attribution 2.0 Generic (CC BY 2.0), see <https://creativecommons.org/licenses/by/2.0/>

³ Albino of *Corvus frugilegus* © 2018 Mark Hope according to Attribution-NonCommercial-NoDerivs 2.0 Generic (CC BY-NC-ND 2.0), see <https://creativecommons.org/licenses/by-nc-nd/2.0/>

⁴ 1. f4 was the favourite first move of Henry Edward Bird for 40 years from 1855.

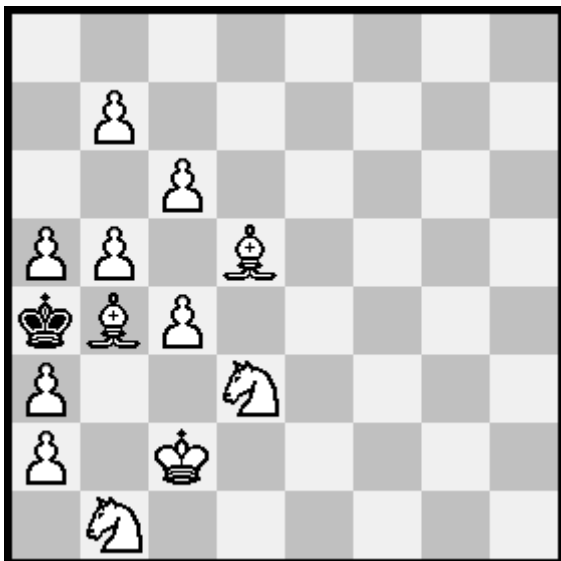
⁵ It turns out that one of us bird-brained authors is already guilty of fowl play. See: <http://bulletin.chessproblems.ca/pdf/cpb-16.pdf> page 758 MR-3 “Retro Rebus Rookery”.

⁶ Chess retrograde analysis writer Raymond Smullyan also eggs-plored logical ornithology in *To Mock a Mockingbird and Other Logic Puzzles: Including an Amazing Adventure in Combinatory Logic*, Raymond Smullyan, 1985, Knopf, ISBN 0-19-280142-2.

⁷ According to Wikipedia, [https://en.m.wikipedia.org/wiki/Rook_\(bird\)](https://en.m.wikipedia.org/wiki/Rook_(bird)), rooks are intelligent birds with an ability to solve simple problems. So perhaps they can tackle retrograde analysis too?

Tutorial⁸

J.M.Ott, A.Buchanan



8/1P6/2P5/PP1B4/kBP5/P2N4/P1K5/1N6

(12+1) First move of wPa3?

(To find this in PDB, the online chess problem database, search at <https://pdb.dieschwalbe.de> for probid='P1383249'.)

Black has no possible last move, so it must have been White, who has made 15 pawn captures. No retraction of a non-capturing move by Wh gives Bl a legal move prior to that, and the only capture that can be undone at this point is a3xXb3. What was X? The only value which gives Bl a legal prior move is R. (E.g. bQb3-a3? implies an impossible check). This last move in the game happens in this example (this is not always the case) to be the first move of wP now on a3, so we have solved the problem:

Retract: 1. b2xRa3 Rb3-(x)a3.

We refer to the task addressed by this problem as: “Type A PxR”. “Type A” means we are not told who has the move, and there is no check in the diagram. This type has been the main focus historically for First Move problems. Some of the easier cases of “Type C” (a check in the diagram) have also been tackled. “PxR” is hopefully obvious, but note that we don’t have separate tasks for separate original pieces e.g. wPa, wPb etc.

So how many Type A tasks are there?

Chess has 6 species of piece, and 7 kinds of move to be shown ("never moved", "move without capture", 5 x "capture particular species"). Promoted pieces are considered to be born anew, so one can ask, for each of the 4 species of promoted piece, for the 7 kinds of move. There are also 4 special moves normally included in such tasks (double pawn hop, 0-0, 0-0-0, and e.p.). This gives $(6+4) \times 7 + 4 = 74$ candidates. However, all knight moves and all but two rook moves seemed impossible to force as first moves, and e.p. is clearly not a first move for the capturing pawn. This

⁸ The first English article version included an entirely different problem, found to be cooked.

left $74-7-5-1 = 61$ achievable tasks. Three of Bernd Schwarzkopf's problems combine multiple simple tasks, so the 61 tasks are exhibited for Type A in 55 compositions. At <https://pdb.dieschwalbe.de> you can type the search string $k='type\ a'$ and $k='econ:first'$.

Compositions are rated under the usual priority list for such economy problems:

- (1) minimize number of units, then
- (2) minimize number of officers, then
- (3) minimize number of major officers, then
- (4) minimize number of queens.

Problems still equal after these criteria have been applied are considered to be *ex-aequo*. Use of non-standard material is not regarded as a defect in these challenges.

This field was first explored in 1981 by Bernd Schwarzkopf⁹, although a few earlier last-movers were found to be record-holders in the first-move space as well. This triggered a widespread burst of ingenious activity in 1983-1984, with Michel Caillaud¹⁰ proving the real master of this subgenre. Then the field went quiet, with only occasional improvements. Werner Keym collected together all the existing problems¹¹ in his book *Eigenartige Schachprobleme*, in 2010, which provoked Gerd Wilts to resolve the final hold-out (KxS) in time for the book's addendum. In 2019, Andrew Buchanan published a set of 10 corrections and improvements, by him and others.¹² And now...

Andrey Frolkin's idea

The difficulty

Any game can be prefixed by a little dance e.g. 1. Sa3 Sa6 2. Rb1 Sb8 3. Ra1 Sa6 4. Sb1 Sb8 which specifically gives one rook a move without capturing. Unless that rook castles (or 50 move rule or draw by repetition apply), this jig will have no impact on the subsequent game. So it seems impossible to prove a specific capture by a rook (e.g. "RxB"), or even that the rook has not moved at all ("R0"). The case where rook moves without capture ("R-") had been solved efficiently a long ago by Schwarzkopf and friends (P0007812). The dead position rule had been used to exhibit R0 (P1272393). But for the other 5 cases, there seemed no hope.¹³

The cunning trick

Castling is defined in the FIDE rules as a king move. So we claim that a castled rook has not yet made its first move! It was just a passenger in the castling. So if there is a position where we can retract a rook move and then uncastle it before it could unmove again, we have solved the challenge. Easy as fowling off a lark! It turns out that all Rx Type A & Type C cases can be handled in this way, as well as a more economical Type A R0.¹⁴ The following table shows the number of White+Black=Total pieces in the records. New rook records in this article are indicated in **bold**.

⁹ *feenschach* 55, 07/1981

¹⁰ *feenschach* 70, 08/1984 A richly merited success because "Caille" = French for a quail

¹¹ *Eigenartige Schachprobleme*, Werner Keym, 2010, Nightrider Press, ISBN 978-3-935586-12-2

¹² *Retro Mailing List*, 03/10/2019

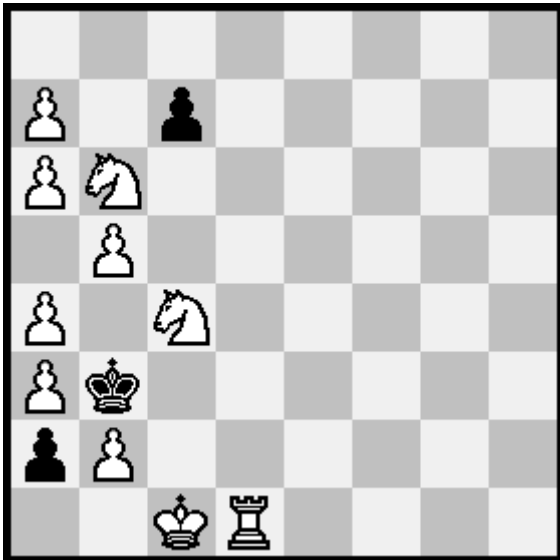
¹³ The phrase "castles in the air" means "unrealistic hopes". It could also be a cryptic crossword definition of "rooks".

¹⁴ As a record, P1272393 is now dead as a dodo.

	Type A	Type C
R0	10+3=13	3+1=4
R-	10+1=11	10+1=11
RxP	14+12=26	16+6=22
RxS	14+10=24	12+8=20
RxB	14+9=23	10+8=18
RxR	13+12=25	13+8=21
RxQ	11+14=25	16+8=24

Type A records

Type A: R0



8/P1p5/PN6/1P6/P1N5/Pk6/pP6/2KR4

Oskar E. Vinje

The Fairy Chess Review 1938

(10+3) Last move?

Deemed stipulation: "First move of wRd1?"

PDB: probid='P0001468'

Wh moved last, and R: 1. 0-0-0 is the only way to avoid immediate retro stalemate: i.e. to ensure that B1 had some prior move. Since castling is a king move, we can truly claim that wR has never moved! Layering Andrey's trick on this classic old problem allows us to supersede the previous record P1272393. Well done, Oskar!

This shows the concept of **deemed stipulation** at work. It is part of the award of the economy record, not the problem itself. This idea of deeming can be applied to respectfully repurpose other older problems, that we want to celebrate as accidental record holders for more recent themes.

It can also help to resolve awkward precedence questions cleanly. E.g. Høeg 1923 P0001056 and Pavlovic 1950 (not in PDB) both had wKb7, wBc8, bKd7, with differing stipulations: "Last move?" vs "First move by bishop?" Well, now for economy record purposes only, we **deem** that Høeg also asked "First move of wBc8?"

Type A: R-

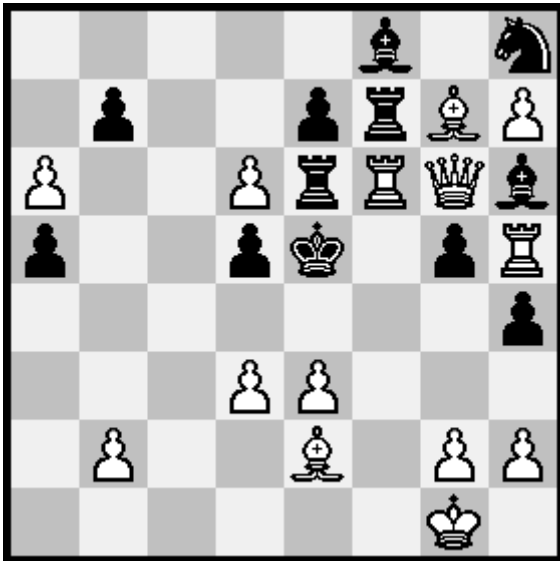
Bernd Schwarzkopf, Wolfgang Dittmann, Godehard Murkisch
feenschach 1981

(10+1) First move of wRg1?

PDB: probid='P0007812'

This would just be a reprint of a problem with no passengers, so we won't include it here. However, the Type C: R- shown later provides a very big hint.

Type A: RxP



5b1n/1p2prBP/P2PrRQb/p2pk1pR/7p/3PP3/1P2B1PP/6K1(14+12)

First move of wRf6?

PDB: probid=' P1382903'

We will give a detailed explanation of this one, as it shows many ideas that occur in the later problems. So the first general step is to look at the missing pieces and definite promotions:

- Wh lost SS, no promotions.
- Bl lost QBSP, promotion to B.

Now we figure out the pawn captures as much as we can:

- Wh pawns: cxd, fxxg - one missing Bl piece unaccounted for. By parity, this last Bl piece wasn't captured by a pawn. So in particular wPa6 never captured.
- Bl pawns: axSb6xSa5, c=B. So Wh captured cxd6, not cxd3, as bPd5 never captured.

There is a "cage" in the top right corner of the board. What was the last piece to move into that big clump? It can't have been wPd6, because on c-file it would block bPc7 from promoting on c1. It can't have been wQ, because in coming from e4 or f5 it would have been delivering an illegal check. It can't have been bK, because if it fled from 4th rank, the prior Wh move was d2-d3+ or e2-e3+. In the former case it blocks wQB's start square, in the latter case it blocks wKR's start square, if wKB returns to f1. The other pieces are easier to check. The only candidate which remains is

wRf6, but in coming to that square, it must have captured a B1 unit already there, or we have another ill-eagle¹⁵ check. Well, that accounts for the last missing B1 unit!

But now what? That B1 unit can't have entered f6 recently, because it could have only done so in response to a Wh check. The clock is ticking: there are only two B1 moves that can be retracted. No other B1 pieces can be uncaptured, as they were captured inside the cage.

So we can teal that this wRf6 is wKR. If we can retract it to g1 or h1, and retract wB to f1, then bK can retract to d4 or f4, with e2-e3+ as the locking move. wK is in the way, and the only way we can remove the dithering buffoon quickly enough is for Wh to uncastle. The retractions therefore look like this:

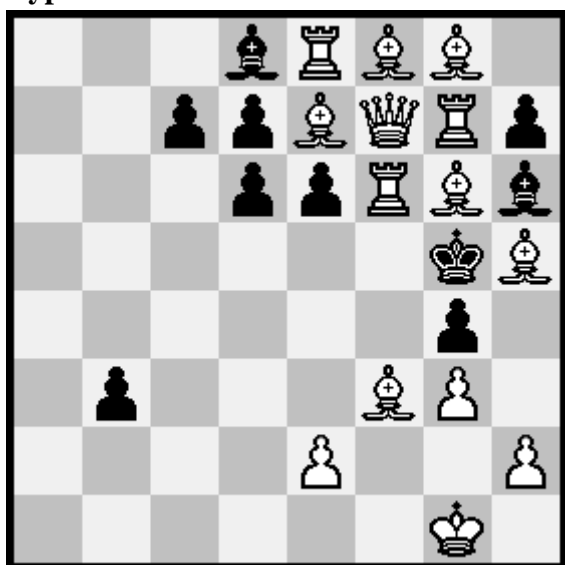
Retract: 1. Rf1xXf6 b6xSa5 2. 0-0 a7xSb6 3. Bf1-e2 Kd4(f4)-e5 4. e2-e3+.

Now what was X, the B1 unit captured on f6? Well, ask what happened to [bfP]. It didn't capture. And since castling happened later, it did not promote. So we say that [bfP] was **waylaid** as a pawn on f6 after an uneventful life.

There's a family of tries that we need to exclude, whereby a free Wh piece might go to retract to f6 to release the B1 pinned unit there: R: 1. Rf2xSf6? b6xSa5 2. Sb3-a5 a7xSb6 3. Sc5-b3 [retropat] 4. Se4-c5 Se8-f6 5. Sf6-e4+. Or suppose it was the wR which returns there, e.g.: R: 1. Rf2xSf6? Sd7-f6 Rf6-f2+ now there is no way that the cage can ever be unlocked. And the other original wR is also confined there ("a bird in a gilded cage"), and so cannot be uncaptured e.g. on a5.

So the only solution is the intended one: **RxP** was the rook's first move after its journey as a passenger in wK's sidecar.

Type A: RxS



3bRBB1/2ppBQRp/3ppRBb/6kB/6p1/1p3BP1/4P2P/6K1
(14+10) First move of wRf6?

¹⁵ As sick as a parrot

PDB: probid=' P1382904'

The basic matrix here is the same, but the details are different.

Missing pieces and definite promotions?

- Wh lost SS, promotions to RBBBB.
- Bl lost QRRBSS, promotion to B.

Pawn captures?

- Wh pawns: axb=R, bxa=B, cxb=B, dxe=B, fxe/g=B or similar. In any case at least 5 pawn captures are required, leaving one Bl unit unaccounted for. Note that in the case of f2xg3, gxf=B, etc., Wh could only have 2 light-squared (Zanzibar red) bishops, but there are 3 on the board.
- Bl pawns: exSd6, fxSe6, a=B.

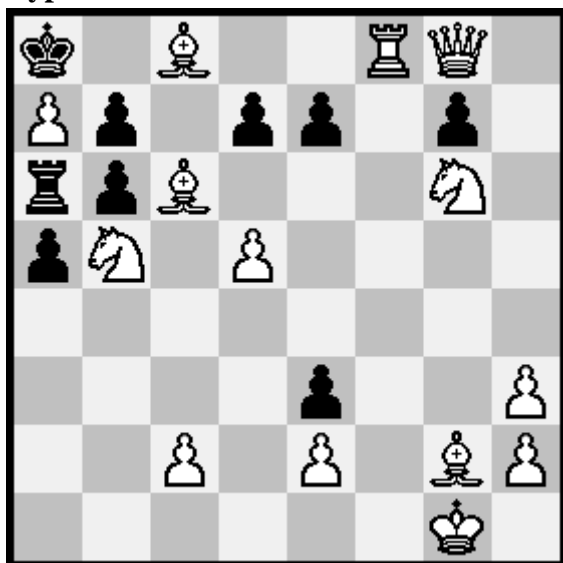
Again the only possibility is that the jailbird wRf6 is wKR, and can uncapture to retreat to h1 via uncastling, in order to beat the race condition and unlock the cage:

Retract: 1. Bg2-f3 b4-b3 2. Rf1xXf6 b5-b4 3. 0-0 b6-b5 4. Bf1-g2 K?4-g5 5. g2-g3+.

What was X? It can't have been bQ or bR, because the castling would have been illegal. It can't have been bB (on account of wrong square colour) or bP as the 8th pawn promoted to an obtrusive one still on the board. Thus by elimination it is bS.

wR promoted on b8, so there is no problem about bPb6 blocking in a promoted unit. One may wonder if it's safe to have wBh5. In fact, R: 1. Bb1xSg6 Se5-g6 2. Bg6-h5+ still leaves the cage intact, as there is no spare Bl piece to capture, because 2. ... Kh5-g5 3. Bc2-g6+? is illegal owing to wQf7 already attacking bK.

Type A: RxB



k1B2RQ1/Pp1pp1p1/rpB3N1/pN1P4/8/4p2P/2P1P1BP/6K1

(14+9) First move of wRf8?

PDB: probid=' P1382906'

Bl captures: c7xb6, fxe, and has captured: wR, wqB.

Wh promotions: c8=B, f7xg8/e8=B; Wh captures: 5 by pawns (axb, bxa, bxc>c8=B, f7xg8/e8=B, g2xPh3); the original Bl Bs were both captured at home.

To release the small cage in the NW corner, c7-c8=B and c6-c7 are needed, to be followed by c7xb6.

An attempt to unpromote Bc6 or Bg2 fails: 1. d4-d5/Bf3-g2 e4-e3 2. Bd5-c6/Bh5-f3 e5-e4 3. Bf7-d5/Sf4-g6 e6-e5 4. Be8-f7/Be8=h5 ??

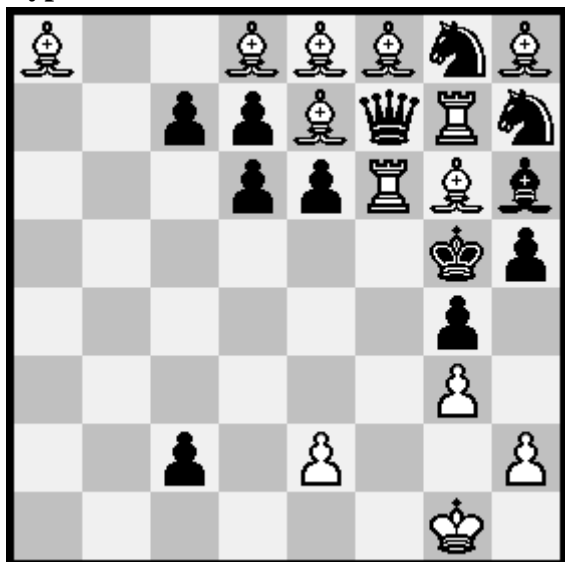
Unpromoting Bc8 also fails on account of one missing tempo. Immediate c7-c8=B? results in illegal check from wRf8: 1. Rf2xBf8 e4-e3 2. c7-c8=B e5-e4 3. d4-d5 e6-e5 4. Bd5-c6 ??

This can be regarded as the main plan. The thematic uncapture of the bishop on f8 eliminates the obstacle – illegal check (this time from Qg8) and so it is part of the preliminary plan.

Retract:1. Rf1xBf8! e4-e3 2. 0-0 e5-e4 3. Bf1-g2 e6-e5 4. g2xPh3 h4-h3 – 8 unique last single moves, then 5. d4-d5 (S~-b5 is also possible) h5-h4 6. B~-c6 h6-h5 7. c7-c8=B h7-h6 8. c6-c7 c7xBb6 9. B~-b6.

One more capture is unique: f7xRg8=B.

Type A: RxR



B2BBBnB/2ppBqRn/3ppRBB/6kp/6p1/6P1/2p1P2P/6K1

(13+12) First move of wRf6?

PDB: probid=' P1382907'

Missing pieces and definite promotions?

- Wh lost QSS, promotions to BBBBB.
- Bl lost RRBP, no visible promotions.

Pawn captures? At least 3 captures are necessary to promote all the Wh pawns: cxb>b8=B, dxe>e8=B, axb=B (or [bPa] was waylaid). The coloring of squares occupied by Wh Bs indicates that there were an even number of Wh P captures. If there were 4 pawn captures, then Wh cannot uncapture Rxf6 or Bxg6, so the cage can never be unlocked. So it can only be 2 Wh pawn captures: [baP] is indeed waylaid to clear the path for [waP] to promote on a8, leaving just one missing Bl unit unaccounted for. Pawn captures:

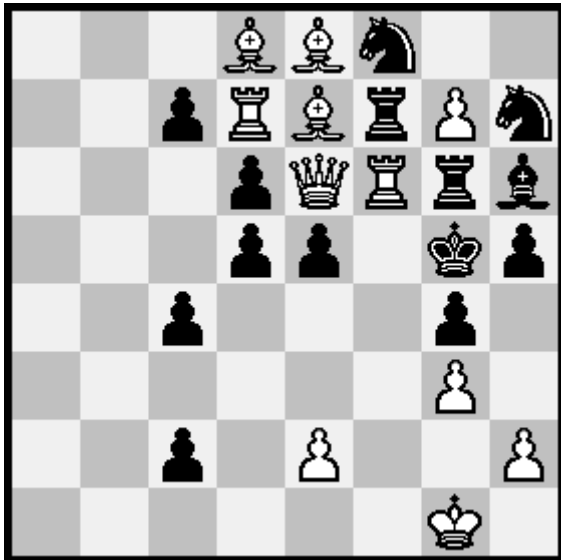
- Wh pawns: a=B, b=B, cxb=B, dxe=B, f=B.
- Bl pawns: bxc, exd6, fxe6, a| (waylaid on a-file, and never promoted).

Bl pawn can't recapture bxc recently, because [wbP] promoted on b8. So the clock is bPc2 unmoving to c6. The cage can only be released in the usual way. Bxg6 would not allow for the return of wKR to its "box" on g1/h1: it can only be Rxf6. The unit uncaptured on f6 can only be bR.

Retract: 1. Rf1xRf6 (as free as a bird) **c3-c2** 2. **Bf3-a8** **c4-c3** 3. **0-0** **c5-c4** 4. **Bg2-f3** **c6-c5** 5. **Bf1-g2** **K?4-g5** 6. **g2-g3+**.

The move sequence is more complicated than in the previous cases because wB must shield the uncastling against bR.

Type A: RxQ



3BBn2/2pRBrPn/3pQRrb/3pp1kp/2p3p1/6P1/2p1P2P/6K1

(11+14) First move of wRf6?

PDB: probid=' P1382908'

Missing pieces and definite promotions?

- Wh lost SSPPP, promotion to B.
- Bl lost QB, no promotions.

Pawn captures?



- Wh pawns: a=?, b=B, c|, d|, fxg. At least 1 pawn capture is required (gxf), leaving one Bl unit unaccounted for.
- Bl pawns: axbxc, bxc, exd, fxe.

The retraction of f2xg3 would mean two captures by wPg7 – one too many. And so, parroting the positions above, the move releasing the cage is g2-g3. It has to be preceded by return of wKR to g1/h1 and of wB to f1. But the bishop is yet to be uncaptured. As to the rook it is unclear at this point whether it should also be uncaptured. Bl can retract one of its c-pawns to the a-file, e.g. a4xRb3xBc2, thus necessitating wPaxb for promotion on b8. The other Bl c-pawn cannot be retracted to the b-file, for that would prevent wPb from promoting on b8. In this scenario, however, no Wh promotion to light-squared bishop is possible.

This means that the cage can only be released in the usual way. The unit uncaptured on f6 can only be bQ, at which point Bl exclaimed: “MacQueen's bustard!”

Retract: 1. Rf1xQf6 flying the coop **b3xBc2 2. Be4-c2 b4-b3 3. Bf3-e4 b5-b4 4. 0-0 c5-c4 5. Bg2-f3 c6-c5 6. Bf1-g2 K~4-g5 7. g2-g3+**. Here, the Bl pawn moves can be ordered in several ways.

As in the previous case, wB must shield the uncastling. In this composition, wPg7 is ok, with no fear of retraction to f6, because there are only two missing Bl units, and one is the light bishop. bPd5 & bKg5 stop any wS from retracting to f6.

	
<p style="text-align: center;"><i>Bubo bubo</i>¹⁶</p> <p>Eagle owl combines the movement abilities of eagle and owl</p>	<p style="text-align: center;"><i>Milvus milvus</i>¹⁷</p> <p>Noted chess boxer, Bob “The Red Kite” Innes¹⁸</p>

Type C records

Only 10 out of potentially 61 of the Type C “First Move” records were ever completed, and most of those are very simple. In PDB, search for: k='type c' and k='econ:first'

The field is unlikely to be as interesting as Type A, because the check can be so strong to force a simplistic record. However, the keen ornithologist can spot passenger rooks lurking here too. In principle, there is a fundamental choice which does not exist for last-movers: “Which side do we want to have delivering the check?” but in practice, all known examples ask about the first move of the piece which moved to check or discovered check.

Type C: R0

Before discussing new compositions, let’s first recognize that the Type C: R0 task is trivially satisfied by two existing problems (ex-aequo). You can easily figure out what the diagrams must be, (except for the bK’s exact position).

Branco Pavlovic
Sahovski Vjesnik 1950

¹⁶ Eagle owl (*Bubo bubo*, Uhu) © 2016 Thomas Brand.

¹⁷ Red Kite (*Milvus milvus*, Rotmilan) © 2016 Thomas Brand.

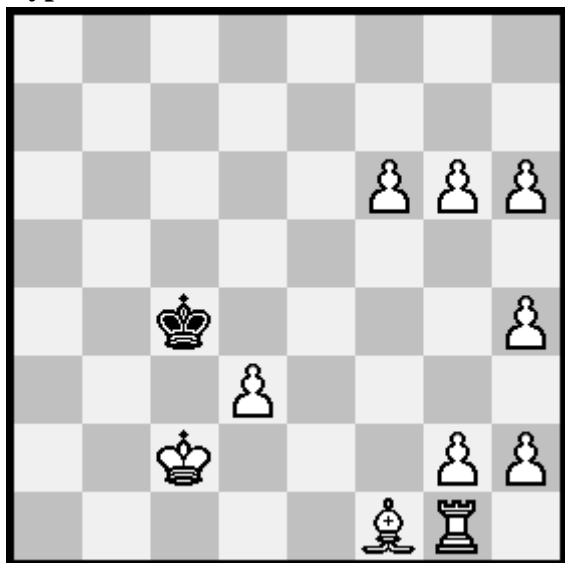
¹⁸ <https://en.chessbase.com/post/swedish-cheboxing-sensation-in-london>

(3+1) First move of K?

Deemed stipulation: "First move of R?"

PDB: probid='P0001103' or probid='P0001104'

Type C: R-



8/8/5PPP/8/2k4P/3P4/2K3PP/5BR1

after Schwarzkopf, Dittmann & Murkisch

(10+1) First move of wRg1?

PDB: probid=' P1382909'

Alas no passengers here, but this diagram indicates the level of economy that any passenger record would need to better. Note that in this problem the check is not delivered by a rook (cf. the Type C RxR record below). Moreover, the last move is not unique – any B1 piece can be uncaptured on d3.

Type C: RxP



3N4/ppp4P/4NBpB/5BQp/4P1BR/R3QRk1/3PP3/6K1

(16+6) First move of Rf3?

PDB: probid=' P1382910'

Missing pieces and definite promotions?

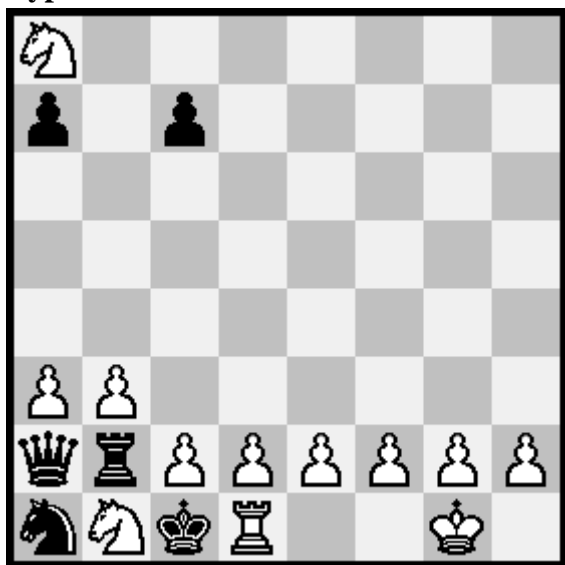
- Wh lost nothing, promoted to QRBB
- Bl lost QRRBBSSPPP, no promotions

Wh pawns captured axbxcxd, bxcxd, cxd, fxe, gxh & hxg - all promotions on d8 except for Bg8. This accounts for 9 Bl units; the 10th was captured through Rxf3#. This was the only capture on the f file, and the missing [bfP] never itself captured, so, as we will see later, Wh's last move was RxPf3#. The last Bl move was not g7-g6 – because [whP] captured on g7, prior to Bl h7-h5 & [wgP] capture on h6. This means that Bl's last move was X~-f3. Before that, Wh checked Bl king(fisher). Qxe3+ or Bf3xg4+ would amount to an inexplicable 11th capture. Only f3xe4+ maintains the Bl balance. But this closes the f-file, ruling out promotion of Bl f-pawn. Therefore Bl's last move was f4-f3, so wR did not come from f4. As just shown, Wh's prior move was f3xe4+, and it must again have been bP captured, as no other capture took place on e-file. The castling can be delayed, but in the end must happen to avoid retropat. Bl pawns are limited in retraction because of the need to allow promoted Bs to escape from d8 & g8.

Retract: 1. Rf1xPf3#! f4-f3 2. f3xPe4+ e5-e4 3. 0-0 Kg2-g3

or extended, e.g.: 3. Sf8-e6 e6-e5 4. Bc3-f5 f5-f4 5. Be7-f6 f6-f5 6. 0-0 Kg2-g3

Type C: RxS



N7/p1p5/8/8/PP6/qrPPPPPP/nNkR2K1

(12+6) First move of wRd1?

PDB: probid=' P1382911'

With bK lurking behind this pawn configuration, there can have been no Wh pawn cross-capture, and b3 must have been played before a3. So bR could not have penetrated the wall. Wh has 4 missing pieces unaccounted for (QRB + Bf1 died at home), so at most one Bl promotion took place – this was bRb2, following two captures by bPb/d and leaving 1 Wh unit missing in action. The last move was 1. RxSd1+. But which square did the rook come from?

R: 1. Re1xSd1+ Sc/e3xQ/Rd1? impossible check.

R: 1. Rf1xSd1+ Sc/e3-d1 2. Rf1xd1+? but no Bl piece to capture.

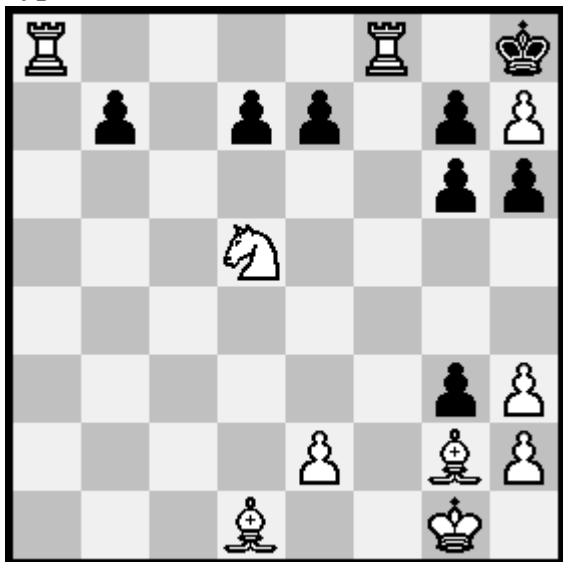
R: 1. Rf1xSd1+ Sc/e3xQ/Rd1 2. Q/Re1xd1+? but no Bl piece to capture.

So by elimination:

R: 1. Rf1xSd1+ Sc/e3-d1 and the only possible out is 2. 0-0+, so Bl S came from c3.

Retract: 1. Rf1xSd1+ Sc3-d1 2. 0-0+.

Type C: RxB



R4R1k/1p1pp1pP/6pp/3N4/8/6pP/4P1BP/3B2K1

(10+8) First move of wRf8?

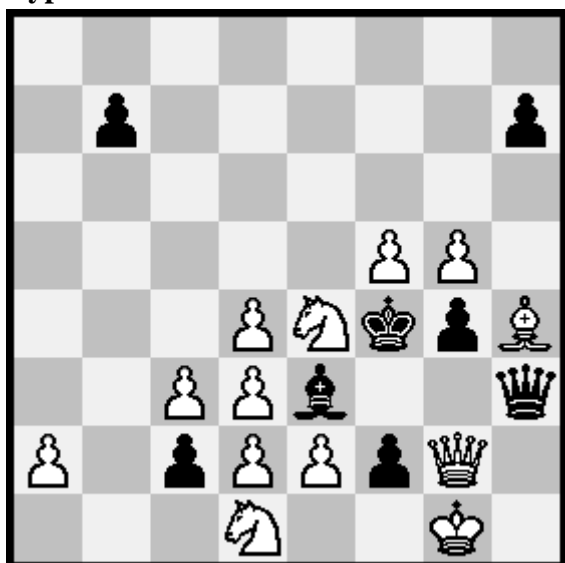
PDB: probid=' P1382912'

Bl balance: 8 + 6 (fxg, g6xh7, g2xh3) + 3 (dxexf, f7xg8/e8=B) + 2 (Bc8, Bf8) = 16.

Wh balance: 10 + 6 (c7xd6xe5xf4xg3, f7xg6, axb>b1) = 16.

Retract: 1. Rf1xBf8+ f4xg3 2. 0-0 e5xf4 3. Bf1-g2 d6xe5 4. g2xh3; later Bd1>g8, f7xe/g8=B, e6xf7/f6-f7, f7xg6. Wh promotes on a8, c8 & e8/g8, Bl promotes on b1.

Type C: RxR



8/1p5p/8/5PP1/3PNkpB/2PPb2q/P1pPPpQ1/3N2K1

(13+8) First move of wKR?

PDB: probid=' P1382913'

Q: Why can't we see the bird?

A: Because it's in "da skies" (disguise)!

Missing pieces and definite promotions?

- Wh lost RRB, no promotions.
- Bl lost RRBSSPPP, no promotions.

Last move: g3xRf2+ (not g3xBf2+ because of wrong square colour); before that, Rf1xXf2+. At this point, Bl can only retract XxRf2 – b3xc2 or h5xg4 would mean one capture too many by Bl. The Wh bishop was captured on g-file. Thus all Wh pieces are accounted for. Wh pawns made 6 captures, one Bl piece was captured on f2; the bPa was waylaid.

Retract: 1... g3xRf2+ 2. Rf1xRf2+ Rf3xRf2 3. 0-0 Qh2-h3

If 2. Rf1xSf2+ Sh1xRf2, the second wR delivers illegal check.

Type C: RxQ¹⁹



8/4p1p1/1Bp5/6PP/5PRQ/1P1P1k1p/PBPrNRN1/n1nB2K1

(16+8) First move of Rf2?

PDB: probid=' P1382914'

Missing pieces and definite promotions?

- Wh lost nothing, promotion to B.
Bl lost QRBBPPPP, no promotions, because...

If f7>f1=B: 5 captures by Wh pawns: hxg>hx, fxe(g)xf4, exd>d8=B

¹⁹ Corrected 23-Dec-2020: bPd7->c6, wSb2->B

Bl balance: 8 (pieces on the board) + 5 (the above captures by Wh pawns) + 1 (Rxf2#) + 1 (Bf8) + 2 (waylaid pawns on the a- and b-files) = 17, impossible.

If d7>d1=B: at least 5 captures by the Wh pawns d...h: dxc/exb/d>b/d8>, e2xd3, hxgxf.



Bl balance: 8 + 5 + 1 (Rxf2#) + 1 (Bf8) + 2 (waylaid pawns) = 17, again impossible.

So actually: Wh's promotion to B requires 1 capture (exPd>d8), and c7 must be open for escape.

Wh pawns also captured two officers hxgxf to allow bPh3; bBf8 was captured at home; 3 Bl pawns (a, b, f) were waylaid; the eighth capture is Rf1xXf2. This was preceded by X~f2. X can only be Q, not R,P (retropat) B,S (unavailable).

Retract: 1. Rf1xQf2# Qg3-f2+ 2. Bf2xPb6+ b7-b6 3. 0-0 Qh2-g3

The only way: 1... Qe1-f2+? makes Bl retropat inevitable after 2. Bf2xPb6+ b7-b6.

	
<p><i>Eremopterix leucopareia</i>²⁰ Fischer's sparrow-lark</p>	<p><i>Euplectes gierowii</i>²¹ Black bishop</p>

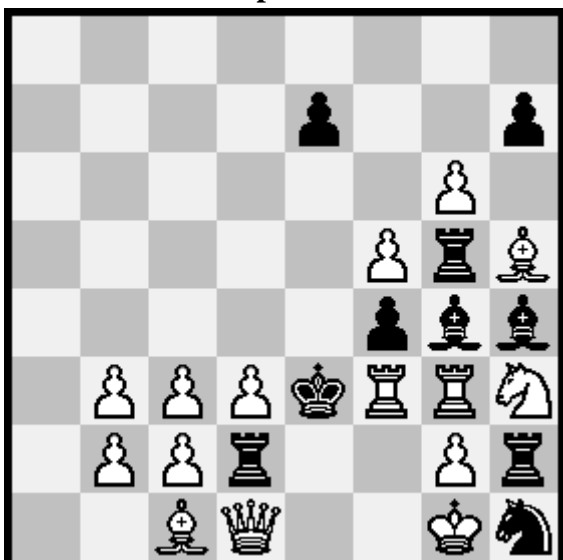
Envoi

Most chess compositions, even very nice ones, are not records. We would like our passengers to disembark with a RxQ problem which is not a record, but in our view has artistic merit because the uncastling in its solution is a waiting retraction (AKA 'retrotempo move'). So take a gander at this:

²⁰ Fischer's sparrow-lark (*Eremopterix leucopareia*, Braunscheitelherche) © 2008 F.Veronesi according to Creative Commons Attribution-Share Alike 2.0 Generic (CC-BY-SA 2.0), see <https://creativecommons.org/licenses/by-sa/2.0/deed.en>

²¹ Black Bishop (*Euplectes gierowii*, Bischofs-Wida / Bischofsweber) © 2005 Aviceda according to Creative Commons Attribution-Share Alike 3.0 Unported (CC-BY-SA 3.0), see <https://creativecommons.org/licenses/by-sa/3.0/deed.en>

Unusual Retrotempo Move



8/4p2p/6P1/5PrB/5pbb/1PPPkRRN/1PPr2Pr/2BQ2Kn

(15+10) First move of wRf3?

PDB: probid=' P1382915'

Missing pieces and definite promotions?

- Wh lost S.
- Bl lost QSPPPP, at least one promoted R.

Wh pawns made 4 captures; one Bl piece was captured through Rxf3+; and bPf was waylaid. The missing wS was captured through gxf4; bPa was promoted on a1; at this point it seems that bPd could also promote. If 1. Rf2xXf3+, retropat for Bl.

Retract: 1. Rf1xXf3+ Sf2-h1 2.0-0 (the tempo retraction – which incidentally rules out bP promotion on d1 and hence proves that $X \neq B/R = Q$) **2... S~f2 3. Sf2(g1)-h3.**



Some passenger rooks in their natural habitat.²²

Appendix – First Move records

Record holders for First Move tasks are listed at <https://www.dieschwalbe.de/firstmoverecords.htm>

Werner Keym wrote in 2010 that the First Move task is little known, and that probably some records can be improved. Ten years later despite many improvements, surely some non-passenger Type A treasures still remain to be unearthed? Even the humble first problem in the article improves on a previous economy record.

A large number of empty Type C slots also beckon. But maybe the passenger rook problems are the most interesting positions of this class? Some of the unclaimed low-hanging fruit are very low indeed, nearly windfalls. A Type A position can often be extended to a Type C position simply by pushing one pawn forward to give check, as in the R- case above. This cheap ploy is not available, for obvious reasons, for Last Move problems, but for First Movers, it can put a lid on the size (and therefore interest) of any record position.



On the other hand, Type B is virgin territory, so is not shown. By default, any Type A record is a candidate for Type B, but can be bettered in some cases. For example Jan Mortensen's pleasantly asymmetric pair P0001043 & P0001046 can be deemed to show Type B R0, via the passenger mechanism, with only 7 units each. Or his P0001045 deemed to offer Type B P--, with only 5 units. Compare Theophilus WillCocks' excellent and necessarily bulkier Type A P--, P0000996.

²² © 2020 Andrew Buchanan

That's owl, folks!

Harrier like that? Hoot have thought it? What a lark! Our sincere egrets for all the puns²³. At some points this article reads like *Finnegans Wake*²⁴ (of vultures) Island Rail. After owl is sedge wren and dunnock, and as the retrograde passenger rooks unflap homewards to their roosts, we bid them farewowl until nest time (if we ever dodo a seagull)²⁵:

“My fate cannot be mastered; it can only be collaborated with and thereby, to some extent, directed. Nor am I the captain of my soul; I am only its noisiest passenger.”
Aldous Huxley²⁶

	
<i>Cygnus olor</i> ²⁷ rook → sook → soak → soap → swap → swan	<i>Cygnus atratus</i> ²⁸ a typically random black swan event

Corrections 23-Dec-2020

Apologies for a few errors, including 2 actual cooks, which crept in to the first version of this article. They are now fixed. Except where noted, they are also errors in the German language version 306-1 *Die Schwalbe* XII/2020, pp.735–742, to be addressed through the magazine's normal Errata procedure.

Location(s)	Change	Notes
Type A R- & Type C R-	Corrected the stipulation to “First move of wRg1”.	Typos
Type C RxB	Clarified retro move sequence from “f7xg8” backwards.	Minor. Promo square can be e8 or g8, as gxRh7 might capture the caged bR.
Type C RxQ	Repaired a cooked problem.	Cook spotted by H.Juel.
Type A UR-	Replaced with an entirely different new problem & solution (Type A BxT). Included footnote.	Earlier problem was cooked and anticipated. Like its anticipator P1108954, it fails to better Ott's Type C UR- (P0000616). (Out of scope for German version of this article.)

²³ Those who need even more wordplay may enjoy Trevor Tao's "Bad Chess Puns" Facebook Group.

²⁴ A notoriously opaque experimental work by famous Irish writer James's flamingo Joyce.

²⁵ We hope this is not the swansong for this set of tasks.

²⁶ This responds to the lines: “I am the master of my fate: I am the captain of my soul.” in the famous poem *Invictus* by William Ernest Henley. Henley was the inspiration for the famous one-legged pirate antagonist Long John Silver in Robert Louis Stevenson's *Treasure Island*. His equally fictional parrot, Captain Flint, would cry “Pieces of Eight”, presumably referring to pawns. So it all fits together!

²⁷ Mute swan (*Cygnus Olor*, Höckerschwan), © Yerpo 2009, Aviceda according to Creative Commons Attribution-Share Alike 3.0 Unported (CC-BY-SA 3.0), see <https://creativecommons.org/licenses/by-sa/3.0/deed.en>

²⁸ Black swan (*Cygnus atratus*, Trauerschwan) Wikimedia Commons 2009 (Fir0002/Flagstaffotos), CC BY-NC.